



# The 13th International Camping Congress

# Greater Bay Area

# Regional Event

◆ The Spirit of China, the Power of the GBA ◆

**Gather in Lingnan | Explore the GBA**  
**Co-Create the Future of Camp Education**

**Dates:**

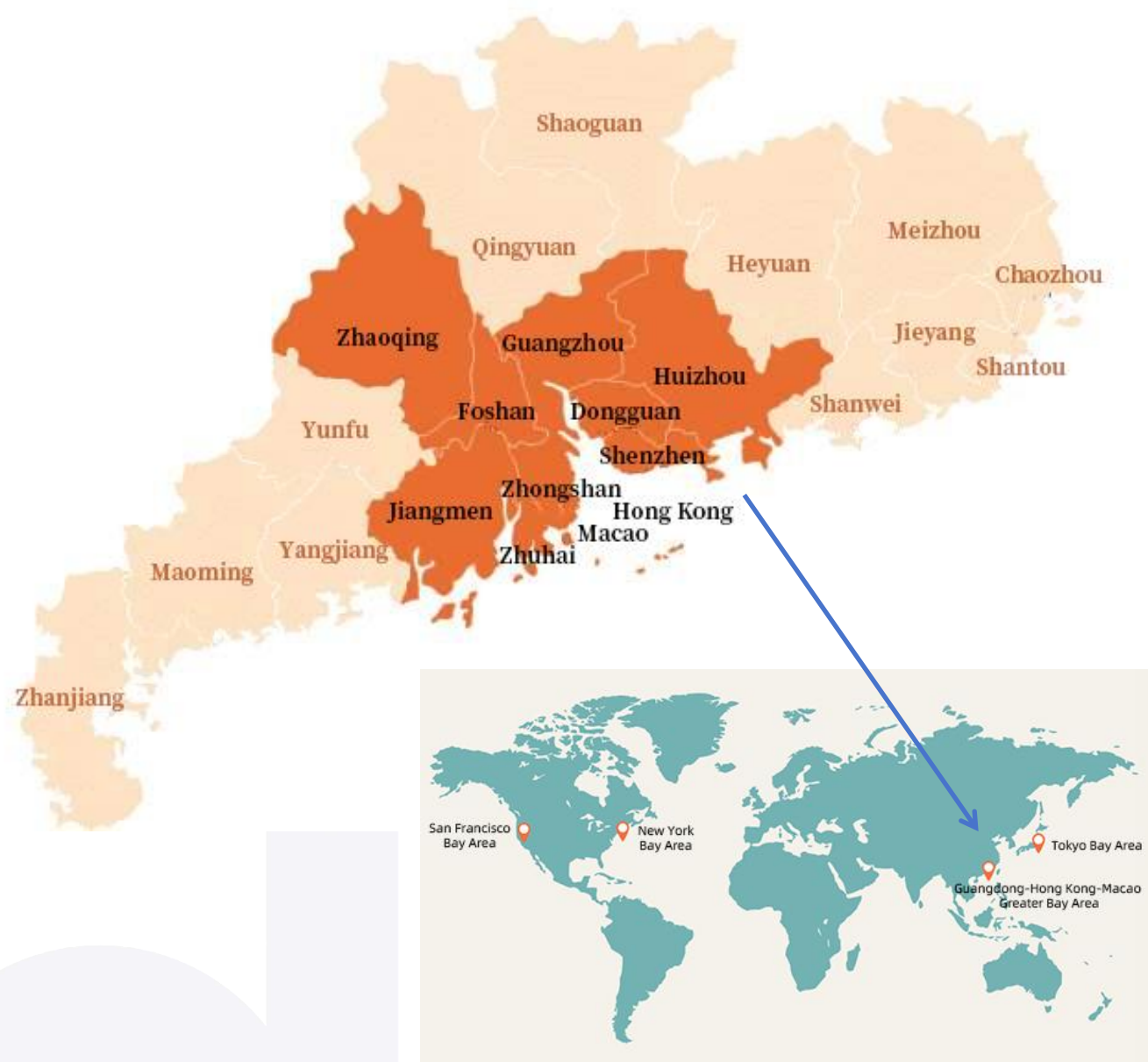
Forums & Cultural Experiences: November 11-12, 2026

Camp Visits & Cultural Travel: November 13-15, 2026

**Venue:** Yongqingfang, Liwan District, Guangzhou, Guangdong Province, China

# I. About GBA

**The Guangdong–Hong Kong–Macao Greater Bay Area (GBA)** is located in South China. It comprises the Hong Kong and Macao Special Administrative Regions, together with nine Pearl River Delta cities in Guangdong Province. As one of China's most open and economically dynamic regions—and one of the world's four major bay areas—the GBA holds a pivotal strategic position in China's overall national development agenda.



Guided by China's national development strategy, the GBA is positioned as a world-class city cluster and innovation hub.

「智鉴全球 营响未来」  
Global Campfire: Sharing Wisdom, Sparking Futures



As one of China's most dynamic and strategically important regions, the Greater Bay Area is home to the highest concentration of Fortune 500 companies in China. It brings together some of the country's most innovative technology leaders, including Huawei, ZTE, DJI, BYD, GAC Group, and Tencent. The GBA also hosts a vibrant ecosystem of startups, incubators, and accelerators across cutting-edge fields such as the internet, biotechnology, and healthcare. For these reasons, many experts regard the region as an emerging "Silicon Valley of Asia."

**In the 2025 Fortune Global 500 ranking, 23 companies from the Greater Bay Area were listed, underscoring its global economic influence.**







## II. Why GBA?

### The GBA, Where the world encounters a dynamic and multidimensional China

The GBA is a place where past, present, and future converge. It is one of China's most open city clusters, the heartland of Lingnan culture, and a vibrant hub of innovation and education.



### 01 | A World-Class City Cluster: A Window into Modern China

The GBA brings together global cities such as Guangzhou, Shenzhen, Hong Kong, and Macao, making it one of China's most dynamic and fast-growing regions. Here, you will experience:

- Skyscrapers alongside historic neighborhoods
- Cutting-edge innovation interwoven with living traditions
- A vibrant ecosystem of multiple languages, cultures, and communities

Walking through its cities, you can clearly feel an open, confident, and highly creative modern China.







## II. Why GBA?

### 02 | Lingnan Culture: A Living Tradition Over a Thousand Years

Lingnan culture is not a static museum display—it thrives in everyday city life. Highlights include:

- Intangible heritage crafts: Cantonese embroidery, lion dance, woodcarving, pottery
- Performing arts: Cantonese opera and Lingnan music
- Unique architecture: Xiguan mansions and arcaded streets
- Culinary culture: Cantonese cuisine, dim sum, and traditional desserts

Lingnan culture is gentle yet subtle, traditional yet open, local yet international, offering visitors a warm and authentic cultural experience.



### 03 | Hub of Educational Innovation: A Natural Playground for Experiential Learning

The GBA is China's most active region for camping education, nature-based learning, study tours, and STEAM education.

- Diverse natural environments: mountains, seas, rivers, and lakes
- Rich educational settings: museums, cultural streets, and parks
- Well-equipped camps and outdoor facilities
- Cultural resources easily integrated into project-based learning

The GBA offers international educators a living laboratory and here, educational innovation is part of everyday life.







## II. Why GBA?

### 04 | Multiple Cities, Multiple Cultures, Multiple Experiences One Region, Over Ten Unique Charms

The charm of the GBA lies in its extraordinary diversity. From Guangzhou, you can reach cities with completely different styles within 1-2 hours.

The “9+2” world-class city cluster forms three major metropolitan areas:

- Guangfo (Guangzhou-Foshan)
- Hongshen (Hong Kong-Shenzhen)
- Aozhu (Macao-Zhuhai)

These areas are interconnected, offering multiple centers of culture, innovation, and urban life.



### 04 | Multiple Cities, Multiple Cultures, Multiple Experiences One Region, Over Ten Unique Charms

- **Guangzhou** — Birthplace of Lingnan culture, a millennium-old trading city, and the cultural & transportation hub of the GBA
- **Shenzhen** — China’s technology capital, a global innovation city, and a symbol of “China Speed”
- **Foshan** — A city of craftsmanship, renowned for lion dance, Chinese Kungfu & martial arts, and ceramics
- **Zhuhai** — A coastal and romantic city, neighboring Macao
- **Zhongshan** — Hometown of Dr. Sun Yat-sen, rich in overseas Chinese heritage, where history meets modern life
- **Jiangmen** — The capital of overseas Chinese culture, home to the UNESCO-listed Kaiping Diaolou
- **Zhaoqing** — A city of mountains and rivers, a natural classroom for outdoor and ecological education
- **Huizhou** — Rich in mountain-and-sea landscapes, an eco-friendly city popular for family and outdoor education
- **Dongguan** — A global manufacturing center, a youth-driven city, and a growing hub for innovative education
- **Hong Kong** — An international financial center and a global crossroads of culture
- **Macao** — A city blending Chinese and Portuguese cultures, a World Heritage destination, and a compact international metropolis

**What this means: In one single region, you can experience the many faces of China.**





## II. Why GBA?

### 05 | Safe, Convenient, and Welcoming : One of the Most Traveler-Friendly Regions in China

International airports

English-friendly cities

Open-minded

Diverse dining and accommodation options

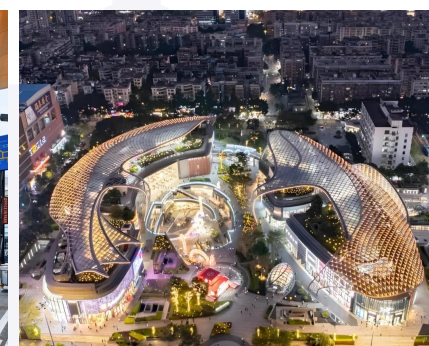
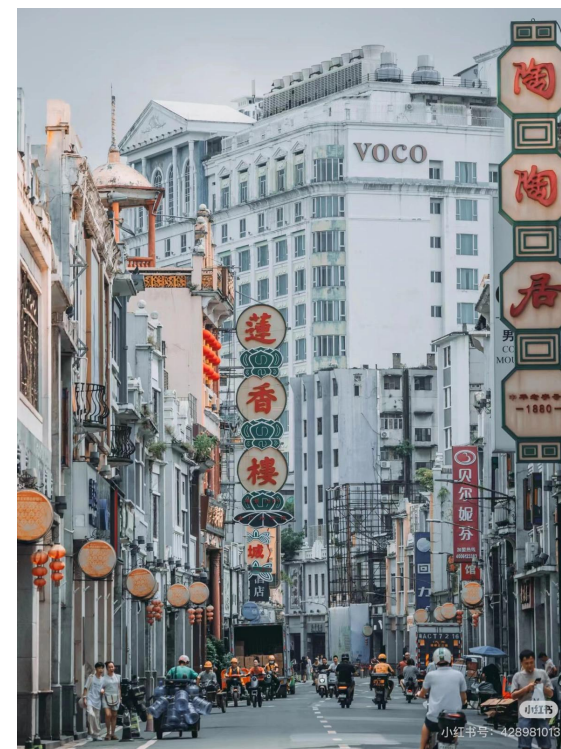
A region visitors often describe as comfortable and welcoming



「智鉴全球 营响未来」  
Global Campfire: Sharing Wisdom, Sparking Futures



### 05 | Safe, Convenient, and Welcoming : One of the Most Traveler-Friendly Regions in China





### III. Why GBA Regional Event?

At the GBA Regional Event, you will gain something different from the main venue.

The GBA program is designed with a strong focus on immersion and experience. From the first two days of forums to off-site camp visits and cultural excursions, every element invites you to step into the living world of Lingnan culture in southern China.

During the forums, you will engage with hands-on intangible cultural heritage experiences, working alongside master artisans to create your own unique Eastern cultural keepsakes. You will connect with peers from southern China's broader camp and outdoor education community, sparking international dialogue and collaboration, and visit innovative youth camps and cultural landmarks to explore how education, creativity, and local culture come together in practice.



「智鉴全球 营响未来」  
Global Campfire: Sharing Wisdom, Sparking Futures





## IV. International Participant Travel& Concierge Support

### Traveling with You

We are here to make your journey smooth and worry-free. From the moment you arrive at the airport until your departure, our team will provide full concierge-style support, taking care of all travel details so you can focus on the experience.

Our team members will also be attending the main congress, giving you a chance to meet, connect, and get familiar before the event fully begins. After the main event, we will accompany you to the Greater Bay Area satellite venue, ensuring a seamless transition and a comfortable journey.

We can assist with domestic flight bookings, helping you choose flights at convenient times. Even if you arrive on a different flight, our team will be ready to coordinate airport pickup and transfers.

Throughout your time with us, you are never traveling alone. Our dedicated team will be by your side, handling logistics and details, so you can fully enjoy networking, learning, and immersing yourself in the regional event experience.







## V. Program Highlights

### GBA × World | Educational Dialogue

- ◆ Themed talks by Chinese and international educators
- ◆ Parallel workshops
- ◆ International student reporters
- ◆ Awards ceremony
- ◆ Dialogue forums
- ◆ Youth speeches
- ◆ International youth exchange camps
- ◆ Evening signature programs:
  - ◆ Cultural Night
  - ◆ Lychee Bay night cruise

### GBA × World | Cultural District Walking Tours

- ◆ Flavors of Old Guangzhou·Intangible Heritage Food & Culture Route
- ◆ Cultural Spaces × Educational Exchange: Curated city walk maps

### GBA × World | Education Exhibitions

- ◆ Global youth camp film & media exhibition
- ◆ Stories of Growth: Camp education outcomes showcase
- ◆ Highlighting young people's learning journeys and achievements through camp-based education

### GBA × World | GBA Camp Visits & Cultural Exploration

The Organizing Committee will curate several post-congress routes, offering in-depth insights into education and camp practices across the Greater Bay Area:

- ◆ Outdoor and camp-based education site visits
- ◆ Study tour and experiential learning models
- ◆ Local culture and distinctive urban experiences
- ◆ Connections to regional education resources and collaboration networks

Routes will be open for selection prior to the Congress.

### GBA × World | Industry Showcase

- ◆ Education sector exhibitions
- ◆ International partnership meetings
- ◆ Resource and network connections

### GBA × World | Lingnan Intangible Cultural Heritage Market

- ◆ Hands-on experience booths featuring Cantonese embroidery, metal crafts, lion dance, ceramics, and more
- ◆ Deep-dive studio visits and workshops with master artisans (by reservation)
- ◆ Camp × Intangible Heritage Photography Exhibition showcasing innovative applications of heritage in camp education



VI. Itinerary

TIME	Morning	Afternoon	Evening	Accommodation
NOV 10	Registration & Check-in Exhibition Open Free Time			Yongqingfang-area hotels
NOV 11	Opening Ceremony Keynote Speech I Keynote Speech II Parallel Workshop I	General Session Parallel Workshop II Parallel Workshop III Exhibition & Intangible Cultural Heritage Market (Open All Day)	Cultural Night & Gala Dinner	
NOV 12	General Session Parallel Workshop IV Parallel Workshop V	Parallel Workshop VI Closing Ceremony Exhibition & Intangible Cultural Heritage Market (Open All Day)	Lychee Bay Night Cruise	
NOV 13	GBA Camp Visits & Cultural Exploration (Three routes available)  Itinerary will be flexibly adjusted according to actual conditions.  Note: For departing flights, it is recommended to schedule on the evening of November 15, with arrival at the airport around 8:00 PM.			Yongqingfang-area hotels or accommodations along designated cultural routes (depending on the selected itinerary).
NOV 14				
NOV 15				
NOV 15				

VII. GBA Camp Visits & Cultural Exploration Routes



① GBA Central Axis:

Guangzhou - Foshan

② GBA Western Route:

Zhongshan - Zhuhai - Macao

③ GBA Eastern Route:

Dongguan - Shenzhen - Hong Kong





## ① GBA Central Axis: Guangzhou - Foshan

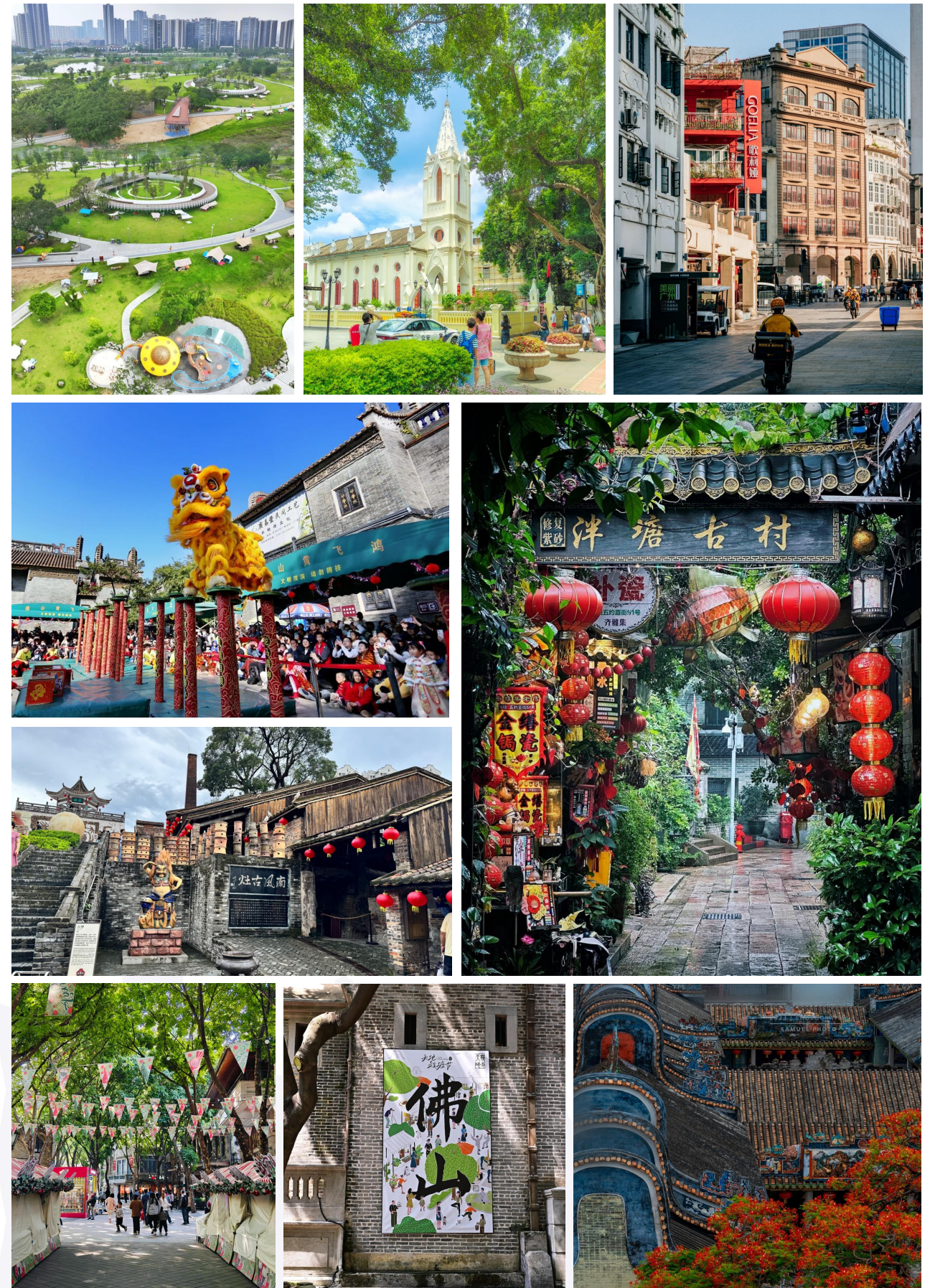
### Theme: Origins of Lingnan Culture · Experience the Millennial Commercial Hub & Artisan Spirit

**Keywords:** Millennial Commercial Hub | Cantonese Intangible Cultural Heritage |  
Lingnan Architectural Crafts | Lion Dance Culture | Chinese Martial Arts | Shiwan  
Ceramics (Foshan)

#### Highlights:

- **Special Camp Visits:** Explore urban camps to understand the integration of youth camp education with city culture
  - **Shamian Island:** Admire clusters of European-style architecture and learn about Guangzhou's history of international exchange
  - **Beijing Road:** Walk along this thousand-year-old street and gain insights into the commercial history and urban development of the region
  - **Foshan Ancestral Temple:** Watch high-pole lion dance performances on-site and experience Chinese martial arts demonstrations
  - **Nanfeng Ancient Kiln:** Visit a functioning Ming Dynasty dragon kiln (Guinness World Record certified), learn ceramic-making processes, and try hands-on traditional craftsmanship
  - **Lingnan Tiandi:** Stroll through streets lined with gray brick and green-tiled traditional houses, wok ear houses and arcade buildings, experiencing the coexistence of heritage architecture and modern commerce
- ◆ **Accommodation:** Hotels or camp lodging along the route
  - ◆ **Return Flight Reminder:** For this route, it is recommended to depart from **Guangzhou Baiyun International Airport**, with an estimated arrival at the airport around 8:00 PM on November 15

「智鉴全球 营响未来」  
Global Campfire: Sharing Wisdom, Sparking Futures





## ② GBA Western Route: Zhongshan – Zhuhai – Macao

### Theme: Hometown of a Great Leader & Coastal Bay Experience · A Cultural Journey of East–West Exchange

**Keywords:** Sun Yat-sen's Hometown | Overseas Chinese Cultural Heritage | Hong Kong-Zhuhai-Macao Bridge (one of the New7Wonders of the World) | Sino-Portuguese Cultural Fusion

#### Highlights:

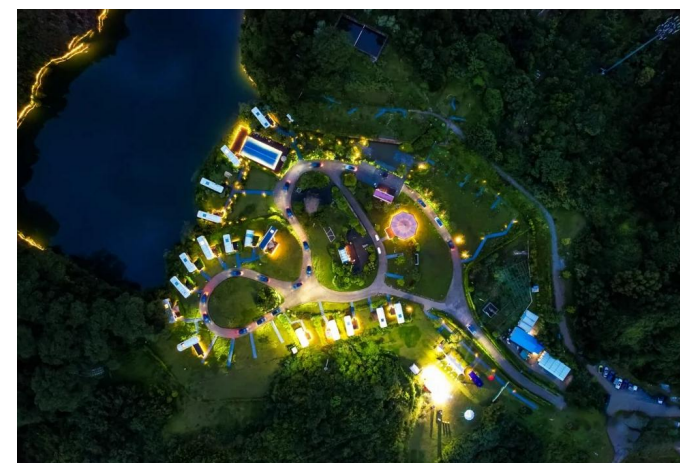
- **Special Camp Visits:** Explore ecological and culture-oriented camps to understand educational practices
- **Sun Yat-sen's Former Residence (Zhongshan):** Visit the birthplace of modern Chinese thought and experience the depth of overseas Chinese culture
- **Zhuhai Coastal City Scenery:** Stroll along the seaside and enjoy the city's open, romantic maritime charm
- **Hong Kong-Zhuhai-Macao Bridge:** Connects the three GBA regions; recognized as a century-defining project and one of the New7Wonders of the World. Take a boat cruise to learn the engineering story, observe the bridge up close, and experience world-class engineering scale and technology
- **Ruins of St. Paul's (Macao):** Admire the UNESCO World Heritage site blending Chinese and Western religious architecture
- **Macao Sino-Portuguese Districts:** Walk along Portuguese-style cobblestone streets and church squares, experiencing long-term East-West cultural coexistence

◆ **Accommodation:** Hotels or camp lodging along the route

◆ **Return Flight Reminder:** For this route, it is recommended to depart from **Macao**

**International Airport**, with an estimated arrival at the airport around 8:00 PM on November 15

「智鉴全球 营响未来」  
Global Campfire: Sharing Wisdom, Sparking Futures





### ③ GBA Eastern Route: Dongguan - Shenzhen - Hong Kong

## Theme: From Manufacturing to Innovation · Journey through the Technology Hub and International Metropolis

**Keywords:** Global Manufacturing Center | Cluster of Fortune 500 Companies |  
International Metropolis | STEAM Education Pioneer | Urban & Coastal Landscapes

### Highlights:

- **Special Camp Visits:** Explore tech-innovation camps and STEAM education practices
  - **Dongguan Manufacturing Base:** Experience the dynamic atmosphere of a global manufacturing hub and the energy of its youth
  - **Shenzhen Corporate Visits:** Home to top enterprises such as Huawei, DJI, BGI, Tencent, and BYD. Participants will visit one company to witness innovation, cutting-edge technology, and the vibrant pace of “China Speed,” observing how technology transforms cities and daily life
  - **Dapeng Fortress:** Walk through this Ming-Qing coastal defense city and appreciate the historical depth of the region
  - **Victoria Peak, Hong Kong:** Take a vintage funicular through the forest and enjoy panoramic views of the bustling city and surrounding landscapes
  - **Golden Bauhinia Square & West Kowloon Cultural District:** Stroll along the waterfront promenade and understand the integration of urban cultural symbols with public art spaces
- ◆ **Accommodation:** Hotels or camp lodging along the route
- ◆ **Return Flight Reminder:** For this route, it is recommended to depart from **Hong Kong International Airport**, with an estimated arrival at the airport around 8:00 PM on November 15

「智鉴全球 营响未来」  
Global Campfire: Sharing Wisdom, Sparking Futures





## VIII. Venue for the GBA Event – Yongqingfang

Located in the heart of the historic Enning Road cultural district in Guangzhou's Liwan District, Yongqingfang is a key new landmark of Lingnan culture and an international window showcasing the city's cultural charm. The district preserves the historic fabric of Xiguan residences and arcade streets, while revitalizing the area through adaptive reuse. It now features intangible cultural heritage sites, creative studios, youth art spaces, traditional craft workshops, and specialty dining, making it one of the prime showcases of Guangzhou's urban cultural spirit.

At the same time, Yongqingfang is one of the important birthplaces of Cantonese Opera and serves as a model site for the "Yongqing Street Revitalization Project." Here, the unique character of century-old Xiguan residences coexists with modern design and digital display technologies, creating a vibrant urban cultural living room that combines historical warmth, everyday life, and innovative energy.

Yongqingfang has become a key platform for international cultural exchange in Guangzhou, regularly hosting global cultural events, intangible heritage experiences, art exhibitions, and design week satellite events, attracting visitors, youth, and creative professionals from around the world. It has been hailed as a **"city cultural card that lets the world understand Guangzhou."**

Embodying the principle of **"coexistence of tradition and innovation"**, Yongqingfang aligns naturally with ICC's spirit of **global connection, cultural exchange, and shared education**. With abundant intangible cultural heritage resources, it is an ideal space for heritage-focused educational programs and urban camp experiences. The district has long operated youth development projects through camp education concepts, successfully hosting heritage summer and winter camps, creating a unique blend of educational practice and cultural experience. During ICC2026 GBA, Yongqingfang will serve as the headquarters for international camp education delegates, hosting opening ceremonies, cultural programs, cross-cultural dialogues, workshops, and exhibitions.

「智鉴全球 营响未来」  
Global Campfire: Sharing Wisdom, Sparking Futures



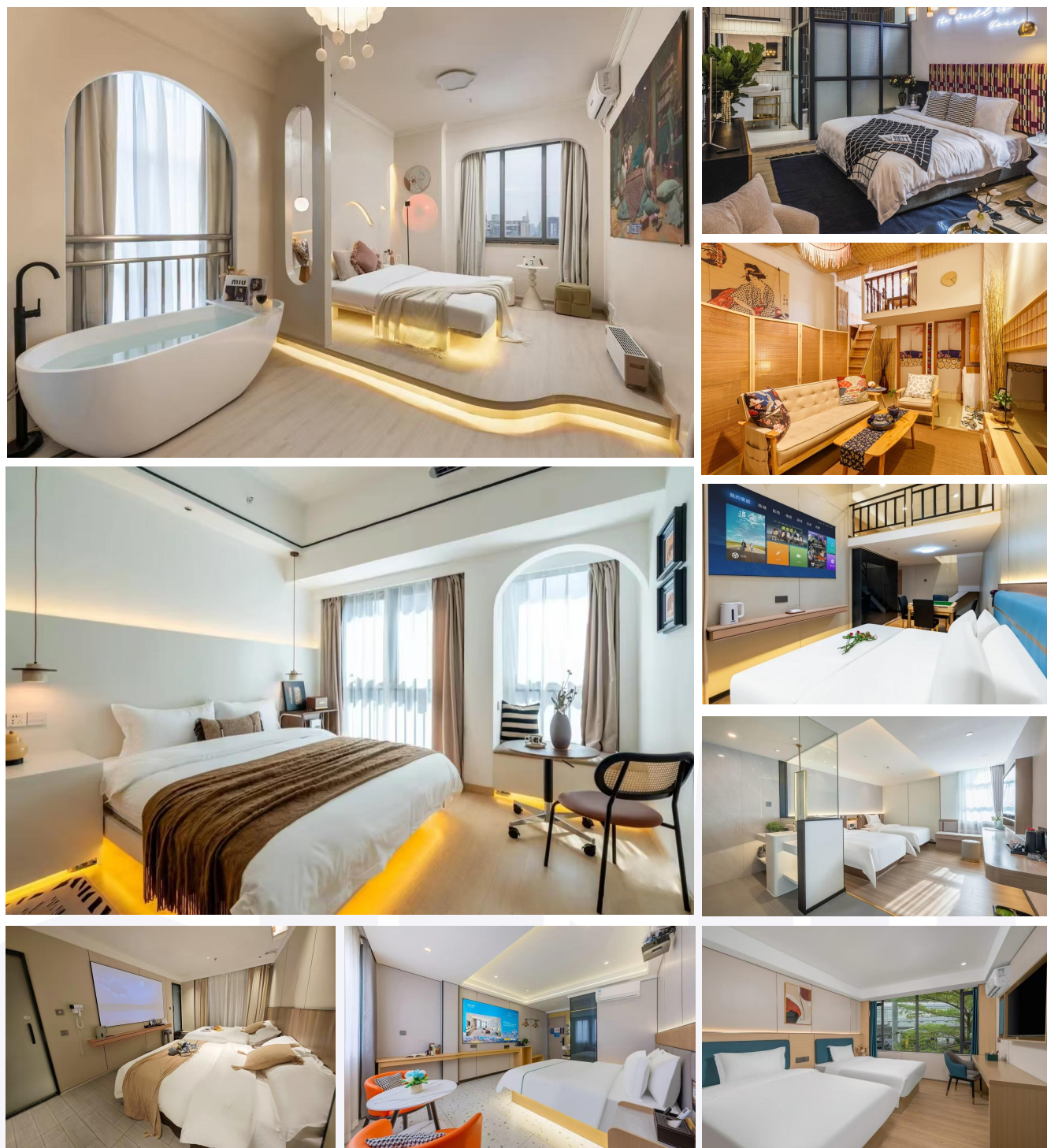




## VIII. Venue for the GBA Event – Yongqingfang

### Accommodation

Yongqingfang offers a variety of lodging options, including boutique guesthouses, themed inns, and five-star hotels. Conveniently located near Guangzhou's main commercial areas and transport hubs, it caters to international guests, families, and youth groups.



「智鉴全球 营响未来」  
Global Campfire: Sharing Wisdom, Sparking Futures



### Dining

**Authentic Lingnan Cuisine:** Dim sum, sweet soups, claypot congee, boat congee, roasted meats, and more

**International Options:** Cafés, Western restaurants, vegetarian options

**Cultural Integration:** Some restaurants offer Lingnan culinary workshops and interactive experiences





## VIII. Venue for the GBA Event – Yongqingfang

### Convenient Transportation

**Metro Access:** Multiple Guangzhou Metro lines reach Yongqingfang directly

**Airport & High-Speed Rail:** About 40 minutes from Guangzhou Baiyun International Airport, 20 minutes from high-speed rail stations

**Walkable District:** Most cultural sites and activities are accessible on foot

**Custom Shuttle Service:** Provided during the event for smooth transport of international guests



## IX. Registration Fees

Regional Activity Fee:

**USD 660** per person

Early Bird (before March 1):

**USD 580** per person

Children: Free for under 6 years old; 50% discount for children aged 6 and above

### Fee Includes:

- 1. Program Fee:** Covers all scheduled activities, including forums, exchange sessions, hands-on experiences, site visits, and cultural tours
- 2. Accommodation:** 5 nights from November 10-14 (including daily breakfast)
- 3. Meals:** Gala dinner on November 11, and full meals from November 13-15
- 4. Transportation:** Local ground transportation from November 10-15, including group airport transfers
- 5. Insurance:** Travel insurance coverage from November 13-15





# The Spirit of China, the Power of the GBA



**Gather in Lingnan | Explore the GBA**  
**Co-Create the Future of Camp Education**

**Dates:**

Forums & Cultural Experiences: November 11-12, 2026

Camp Visits & Cultural Travel: November 13-15, 2026

**Venue:** Yongqingfang, Liwan District, Guangzhou, Guangdong Province, China

